

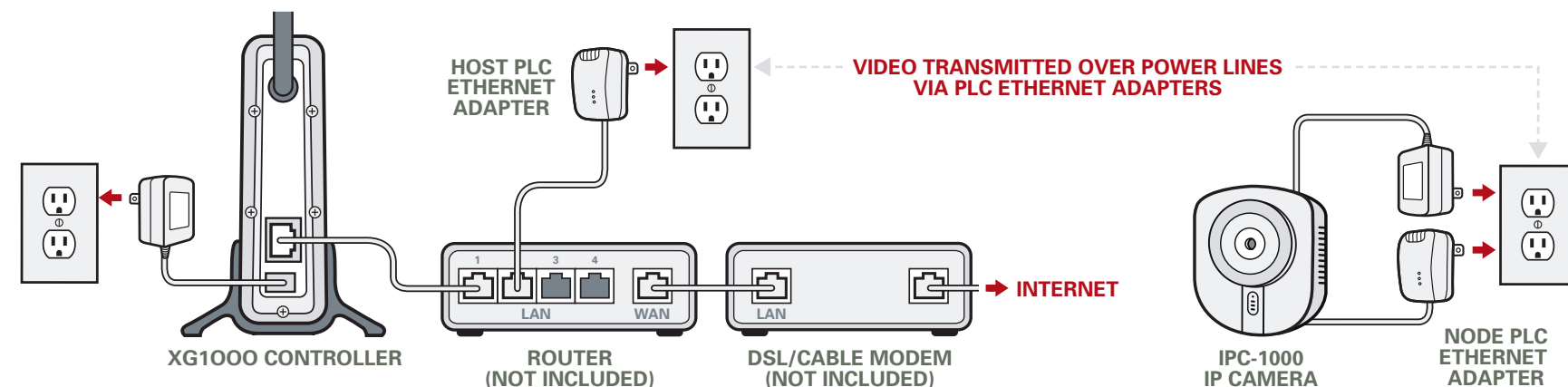
STEP 1

CONTROLLER SETUP

A. Hardware Installation

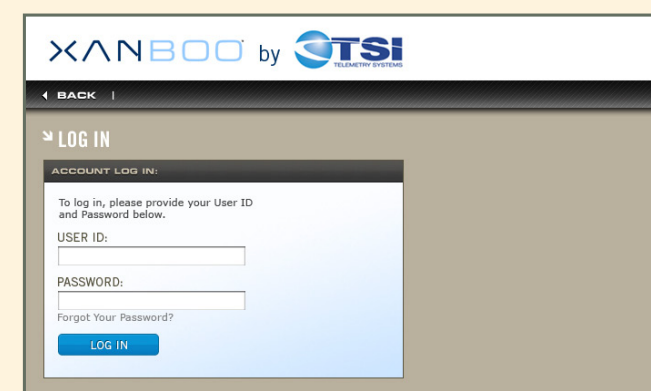
Connect the XG1000 Controller to a free port on your router or home network device with Ethernet cable. Then connect the host HomePlug Turbo PLC Ethernet Adapter to a second free port. (If there are not enough open ports on your router a network hub or switch may be connected to your router to provide more ports.)

Connect Camera(s) and node HomePlug Turbo PLC Ethernet Adapter(s) to AC power outlet (place the Cameras anywhere you would like in your home). Once connected, the Controller will go through a boot-up sequence.



B. Login

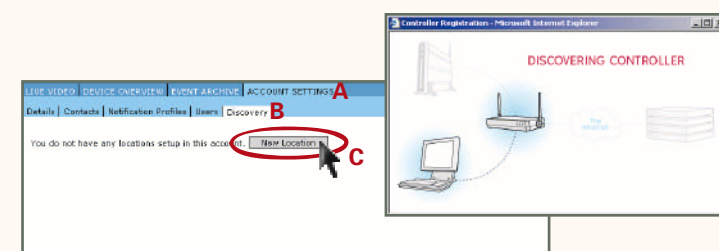
Using a PC on the same local network as your Controller, access <https://tsi.xanboo.com/tsi/> through a web browser. Enter the **UserID & Password**, you created when you purchased the system, in the proper fields and log in to your Remote Monitoring account as shown below.



C. Controller Registration

Once logged into your account, navigate to the (A) 'ACCOUNT SETTINGS', then (B) 'DISCOVERY' and click (C) **New Location Button**, as shown below, to register your Controller to your account.

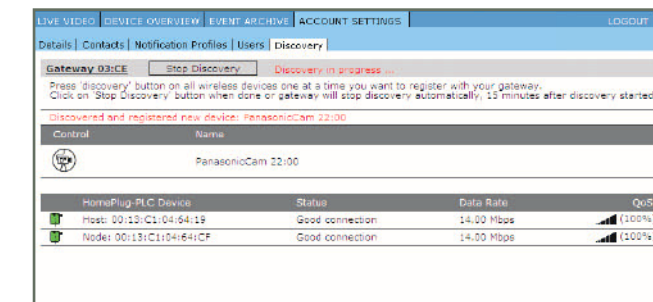
The Controller registration Wizard will prompt you to download the plug-in needed to complete this process. When complete click on the 'CONTINUE WITH DEVICE DISCOVERY' link.



STEP 2

DISCOVER DEVICES

The Discovery process should start automatically. If you don't see a message that Discovery is initializing or in progress, press the **Start Discovery Button** to start the Discovery process. After the message changes to 'DISCOVERY IN PROGRESS...' your Cameras and PLC Ethernet Adapters will automatically discover to your controller. To discover other devices, press the appropriate **Discovery Button** on the device as shown below.



CAMERA AND DEVICE DISCOVERY IN PROGRESS



CAMERA AUTO DISCOVERS



DOOR SENSOR (INCLUDED)

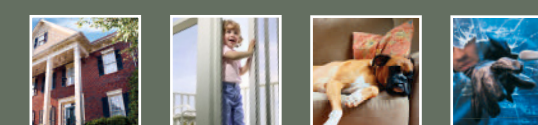


ACCESSORIES

STEP 3

MOBILE APPLICATION

You can access the system from just about anywhere with a web-enabled cell phone. Just use your phone's web browser to download and install the application from <http://tsi.xanboo.com/mobile/j2me> (with a JAVA enabled phone) or from <http://tsi.xanboo.com/mobile> (if your phone is not JAVA enabled) and enter your remote account **UserID & Password**.



CONGRATULATIONS!

YOU HAVE REGISTERED AND INSTALLED YOUR XG1000 CONTROLLER!
YOU ARE NOW FULLY ABLE TO BE THERE, EVEN WHEN YOU'RE NOT!